



66 Burdekin Road Wilberforce NSW

3 2 3

17m WORKSHOP
LARGE REAR PADDOCK for HORSES
DOWNSTAIRS TEENAGE RETREAT

Price : \$850 pw
View : <https://www.hometownpropertypartners.com.au/ease/nsw/hawkesbury/wilberforce/residential/acreagesemirural/7916836>

This home has so many incredible features.

Plenty of room should you have horses, or machinery. The home has been freshly renovated.

Some features include:

Brand new kitchen with dishwasher and built-in microwave
Kitchen, lounge and dining with access to rear balcony overlooking views

Three good size bedrooms
Master bedroom includes balcony access
Built in wardrobes and ceiling fans to all bedrooms

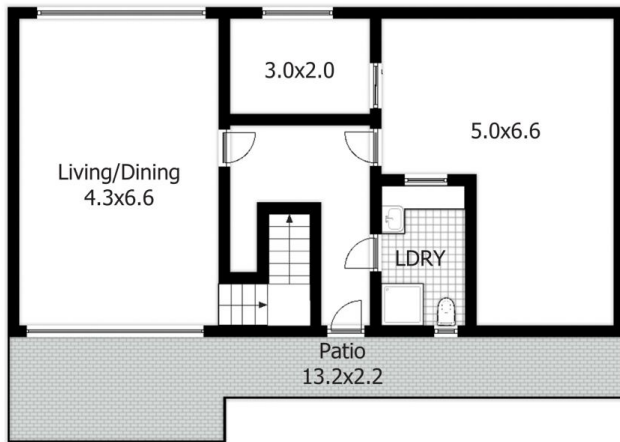


Brooke Saliba
02 9627 9001

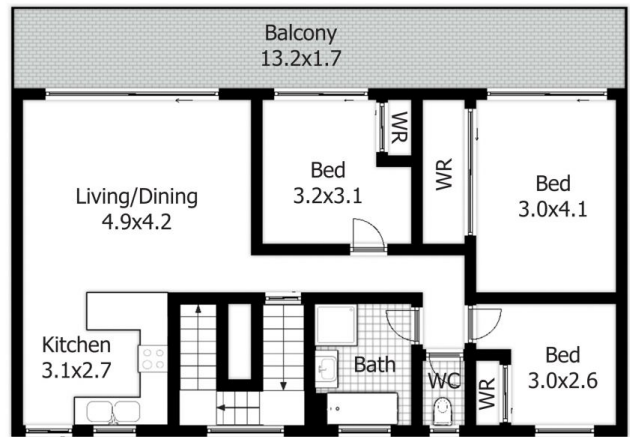


Harry Martignago
02 9627 9001

66 Burdekin Road, Wilberforce



GROUND FLOOR



FIRST FLOOR

DISCLAIMER:

This floor plan is used for marketing purpose only and is subject to errors and inaccuracy. The marketing Agent & N2 Media will not accept any liability. Interested parties should make and rely on their own enquiries.